

TECHNICAL DATA

# Fluke 370 FC Series True-rms Wireless AC/DC Clamp Meters



## LOG AND TREND MEASUREMENTS

Transmit results wirelessly via Fluke Connect Measurements app

## WORK SAFELY

Capture measurements outside the arc flash zone with Bluetooth connectivity to your Apple or Android devices

## LO-PASS FILTER

Integrated VFD low-pass filter (Fluke 376 FC and 375 FC) for accurate motor drive measurements

## TRUE-RMS

True-rms voltage and current for accurate measurements on non-linear signals

## WARRANTY

Three-year

## The Fluke 370 FC Series (376 FC, 375 FC and 374 FC) offers advanced troubleshooting performance.

The iFlex™ flexible current probe allows easy connections to wires in tight spaces. In addition, all three clamps are now part of the Fluke Connect™ family of wireless test tools. Now you can:

- Log and trend measurements to pinpoint intermittent faults
- Transmit results wirelessly via Fluke Connect Measurements app
- Create and send reports right from the field
- Capture measurements outside the arc flash zone with Bluetooth connectivity to your Apple or Android devices

## Product highlights

- Connect your meter to your smartphone using Fluke Connect Measurements app to increase the troubleshooting power of your clamp
- Read measurements on your phone at a safe distance, wearing less PPE while your meter takes all the risks
- Record results directly to your phone and the Fluke Cloud™
- Capture intermittent faults while performing other tasks using the logging capabilities of the Fluke 376 FC and 375 FC
- Create and share reports from the field via email, or converse in real time with ShareLive™ video calls
- iFlex flexible current probe expands the measurement range to 2500 A ac; provides access to large conductors in tight spaces (included with 376 FC; compatible with 375 FC and 374 FC)
- TPAK magnetic hanging strap (included with 376 FC; compatible with 375 FC and 374 FC) allows you to conveniently hang the meter while using the probes
- Integrated VFD low pass filter (Fluke 376 FC and 375 FC) for accurate motor drive measurements
- Proprietary in-rush measurement technology to filter out noise and capture motor starting current exactly as the circuit protection sees it
- CAT IV 600 V, CAT III 1000 V safety rating
- Three-year warranty
- Soft carrying case

## Measurement capability

- 1000 A ac and dc current measurement (376 FC); 600 A ac and dc (375 FC and 364 FC)
- 2500 A ac current measurement with iFlex® flexible current probe
- 1000 V ac and dc voltage measurement
- True-rms voltage and current for accurate measurements on non-linear signals
- Frequency measurement to 500 Hz with body jaw and iFlex (376 FC and 375 FC)
- Resistance measurement to 60 k $\Omega$  (376 FC and 375 FC) or 6000  $\Omega$  (374 FC), with continuity detection
- Min, max, average and in-rush recording to capture variations automatically
- 500 mV dc measurement range to interface with other accessories (376 FC and 375 FC)
- 1000  $\mu$ F capacitance measurement

## Comparison chart

	<b>Fluke 376 FC</b>	<b>Fluke 375 FC</b>	<b>Fluke 374 FC</b>
CAT rating	CAT III 1000 V, CAT IV 600 V	CAT III 1000 V, CAT IV 600 V	CAT III 1000 V, CAT IV 600 V
A ac range	999.9 A with clamp jaws 2500 A with iFlex flexible current clamp	600 A with clamp jaws 2500 A with optional iFlex flexible current clamp	600 A with clamp jaws 2500 A with optional iFlex flexible current clamp
A dc range	999.9 A	600 A	600A
Best resolution	0.1 A	0.1 A	0.1 A
V ac range	1000 V	1000 V	1000 V
V dc range	1000 V	1000 V	1000 V
mV dc range	500 mV	500 mV	
Ohms range	60.00 k $\Omega$	60.00 k $\Omega$	6000 $\Omega$
Frequency	5-500.0 Hz	5-500.0 Hz	
Capacitance	1 $\mu$ F-1,000 $\mu$ F	1 $\mu$ F-1,000 $\mu$ F	1 $\mu$ -1,000 $\mu$ F
Auto shutoff	•	•	•
True RMS	•	•	•
Display hold	•	•	•
Inrush measurements	•	•	•
Backlight	•	•	•
DC zero	•	•	•
Min/max	•	•	•
VFD low pass filter	•	•	-
Logging	•	•	-
iFlex flexible current clamp	Included	Optional	Optional
Fluke Connect compatible	•	•	•

## Specifications

<b>General specifications</b>	
Maximum voltage (between any terminal and earth ground)	1000 V
Battery type	2 AA alkaline batteries, IEC LR6
Temperature	
Operating	-10 °C to +50 °C (14 °F to + 122 °F)
Storage	-40 °C to +60 °C (-40 °F to + 140 °F)
Operating humidity	Non condensing (< 10 °C (50 °F)), ≤90 % RH (at 10 °C to 30 °C (50 °F to 86 °F)), ≤75 % RH (at 30 °C to 40 °C (86 °F to 104 °F)), ≤45 % RH (at 40 °C to 50 °C (104 °F to 122 °F))
Altitude	
Operating	3000 m (9842 ft)
Storage	12,000 m (39,370 ft)
Dimensions	24.9 cm (9.8 in) x 8.5 cm (3.3 in) x 4.5 cm (1.7 in)
Weight	395 g (13.9 oz)
Jaw opening	34 mm (1.3 in)
Flexible current probe diameter	7.5 mm (.29 in)
Flexible current probe cable length (head to electronics connector)	1.8 m (70.8 in)
Safety	IEC 61010-1, Pollution Degree 2 IEC 61010-2-032: CAT III 1000 V / CAT IV 600 V IEC 61010-2-033: CAT III 1000 V / CAT IV 600 V
IP rating	IEC 60529: IP30, non-operating
Radio frequency certification	FCC ID:T68-FBLE IC:6627A-FBLE
Electromagnetic Compatibility (EMC)	International: IEC 61326-1: Portable, Electromagnetic Environment, IEC 61326-2-2 CISPR 11: Group 1, Class A  Korea (KCC): Class A Equipment (Industrial Broadcasting & Communication Equipment) USA (FCC): 47 CFR 15 subpart B. This product is considered an exempt device per clause 15.103.
Temperature coefficients	Add 0.1 × specified accuracy for each degree C above 28 °C or below 18 °C

## Specifications (continued)

Function	Range	Resolution	Accuracy	Crest factor	Trigger level
AC current via jaw	374 FC and 375 FC: 600.0 A  376 FC: 999.9 A	0.1 A	2 % ±5 digits (10 Hz to 100 Hz)	3 at 500 A (375 FC and 376 FC only) 2.5 at 600 A 1.42 at 1000 A (376 FC only) Add 2 % for C.F. >2	-
AC current via flexible current probe	2500 A	374 FC and 375 FC: 0.1 A (≤ 600.0 A), 1 A (≤ 2500 A)  376 FC: 0.1 A (≤ 999.9 A), 1 A (≤ 2500 A)	3 % ±5 digits (5 Hz to 500 Hz)	3.0 at 1100 A (375 FC and 376 FC only) 2.5 at 1400 A 1.42 at 2500 A Add 2 % for C.F. >2	-
DC current	374 FC and 375 FC: 600.0 A  376 FC: 999.9 A	0.1 A	2 % ±5 digits	-	-
AC voltage	1000 V	0.1 V (≤600.0 V) 1 V (≤1000 V)	1 % ±5 digits (20 Hz to 500 Hz)	-	-
DC voltage	1000 V	0.1 V (≤600.0 V) 1 V (≤1000 V)	1 % ±5 digits	-	-
mV dc	500.0 mV	0.1 mV	1 % ±5 digits	-	-
Frequency via jaw	375 FC and 376 FC: 5.0 Hz to 500.0 Hz	0.1 Hz	0.5 % ±5 digits	-	5 Hz to 10 Hz, ≥10 A 10 Hz to 100 Hz, ≥5 A 100 Hz to 500 Hz, ≥10 A
Frequency via flexible current probe	375 FC and 376 FC: 5.0 Hz to 500.0 Hz	0.1 Hz	0.5 % ±5 digits	-	5 Hz to 20 Hz, ≥25 A 20 Hz to 100 Hz, ≥20 A 100 Hz to 500 Hz, ≥25 A
Resistance	374 FC: 6,000 Ω  375 FC and 376 FC: 60 kΩ	374 FC: 0.1 Ω (≤600 Ω), 1 Ω (≤6000 Ω)  375 FC and 376 FC: 0.1 Ω (≤600 Ω), 1 Ω (≤6000 Ω), 10 Ω (≤60 kΩ)	1 % ±5 digits	-	-
Capacitance	1000 μF	0.1 μF (≤100 μF), 1 μF (≤1000 μF)	1 % ±4 digits	-	-

## Ordering information

**374 FC** 600A AC/DC True-rms Wireless Clamp Meter

**375 FC** 600A AC/DC True-rms Wireless Clamp Meter

**376 FC** 1000A AC/DC True-rms Wireless Clamp Meter with iFlex

### Included

18-inch or 36-inch iFlex Flexible Current Probe (376 FC only)

**TPAK** Magnetic Hanging Strap (376 FC only)  
Soft Carrying Case

**TL75** Test Leads

Two AA Alkaline Batteries

Coated Instruction Card

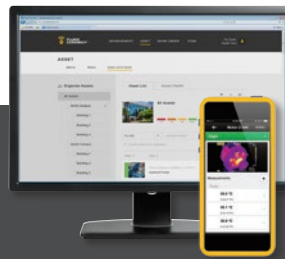
Safety Information Sheet

### Optional accessories

**TPAK** Magnetic Hanging Strap  
(included with 376 FC)

18-inch or 36-inch iFlex Flexible Current Probe  
(included with 376 FC)

Visit [www.fluke.com](http://www.fluke.com) to get complete details on these products or ask your local Fluke sales representative.



### Preventive maintenance simplified. Rework eliminated.

Save time and improve the reliability of your maintenance data by wirelessly syncing measurements using the Fluke Connect system.

- Eliminate data-entry errors by saving measurements directly from the tool and associating them with the work order, report or asset record.
- Maximize uptime and make confident maintenance decisions with data you can trust and trace.
- Move away from clipboards, notebooks and multiple spreadsheets with a wireless one-step measurement transfer.
- Access baseline, historical and current measurements by asset.
- Share your measurement data using ShareLive™ video calls and emails.
- The 370 FC Series Clamp Meters are a part of a growing system of connected test tools and equipment maintenance software. Visit the Fluke website to learn more about the Fluke Connect system.

Find out more at [fluke.com](http://fluke.com)



All trademarks are the property of their respective owners. WiFi or cellular service required to share data. Smartphone, wireless service and data plan not included with purchase. First 5GB of storage is free.

**Smartphone wireless service and data plan not included with purchase. Fluke Connect is not available in all countries.**

**Fluke.** *Keeping your world up and running.*®

**Fluke Corporation**  
PO Box 9090, Everett, WA 98206 U.S.A.

**Fluke Europe B.V.**  
PO Box 1186, 5602 BD  
Eindhoven, The Netherlands

**Modification of this document is not permitted without written permission from Fluke Corporation.**

**For more information call:**  
In the U.S.A. (800) 443-5853 or  
Fax (425) 446-5116  
In Europe/M-East/Africa +31 (0)40 267 5100 or  
Fax +31 (0)40 267 5222  
In Canada (800)-36-FLUKE or  
Fax (905) 890-6866  
From other countries +1 (425) 446-5500 or  
Fax +1 (425) 446-5116  
Web access: <http://www.fluke.com>

©2015, 2020, 2021 Fluke Corporation.  
Specifications subject to change without notice.  
11/2021 211088-6005995c-en